

3551 Plano Parkway

The Colony, Texas

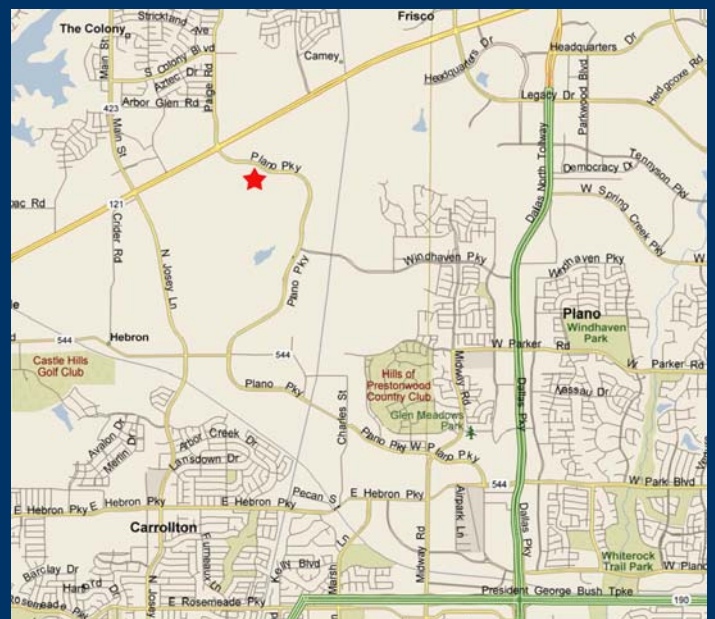
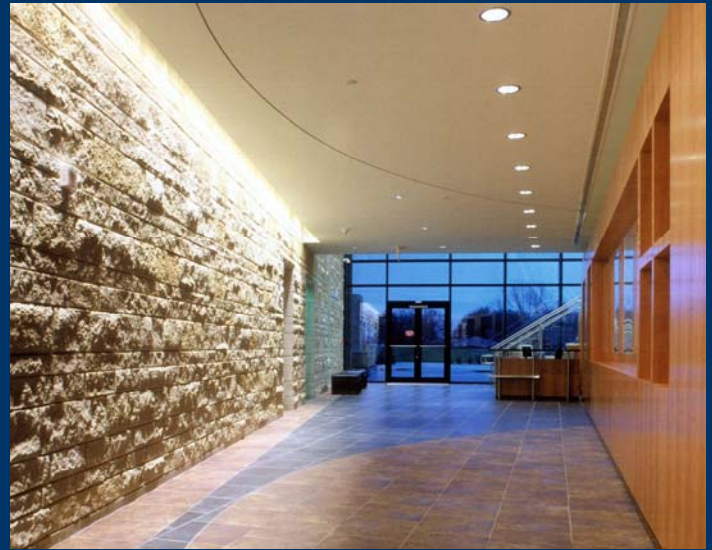


Building Facts

- Single Tenant Project
- 38,130 rsf , 2 Stories
- Built 2001
- Kitchen/Conference and Breakroom on-Site
- 19,500 rsf Average Floor Size
- Abundant Surface Parking
- Large Presence on Plano Parkway
- Excellent Access to IH 121, Dallas North Tollway and George Bush Turnpike

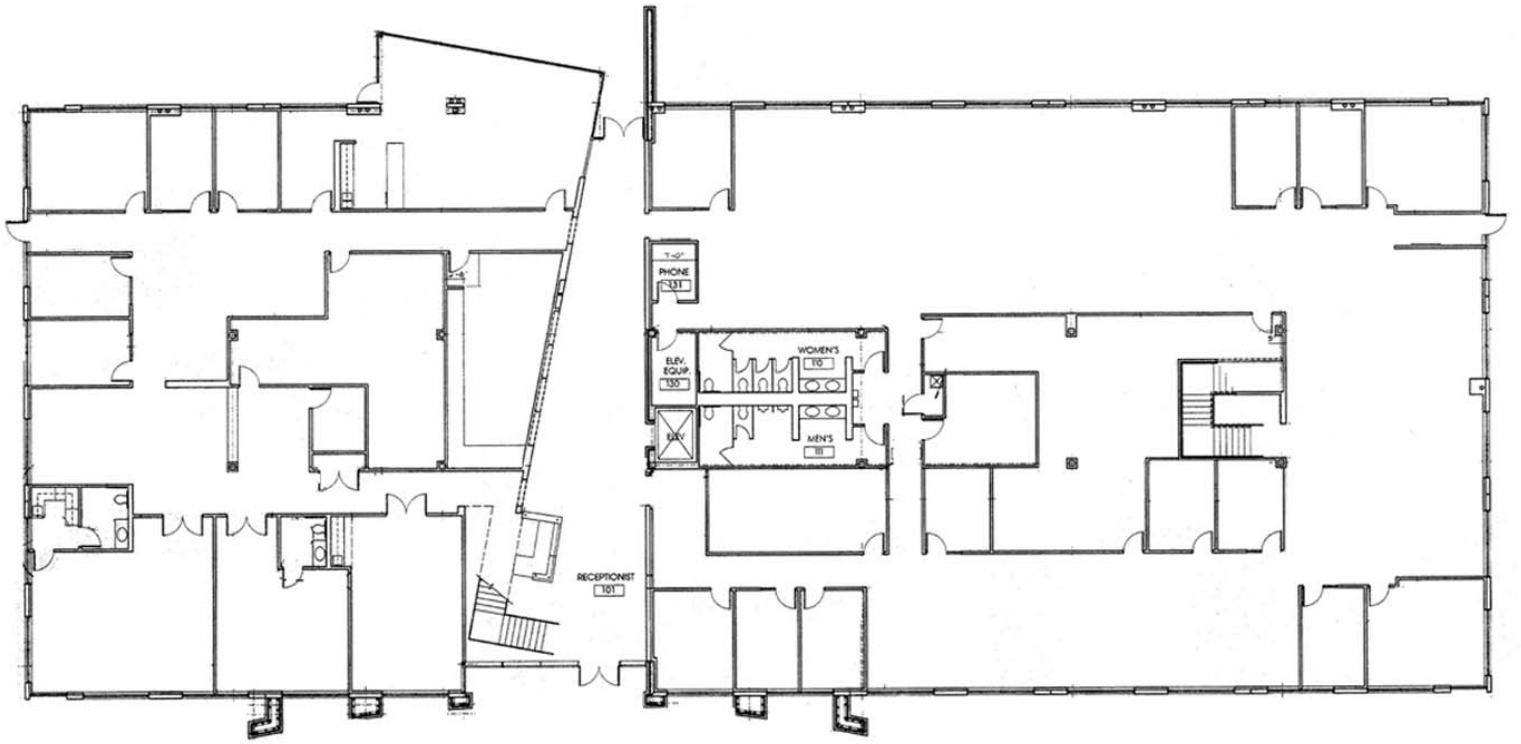
Nearby Amenities

- Abundant Area Amenities Including; World Class Shopping, 4-Star Dining and Several Hotels
- Close Proximity to Larry North Fitness Center, LA Fitness and The Colony Five Star Park

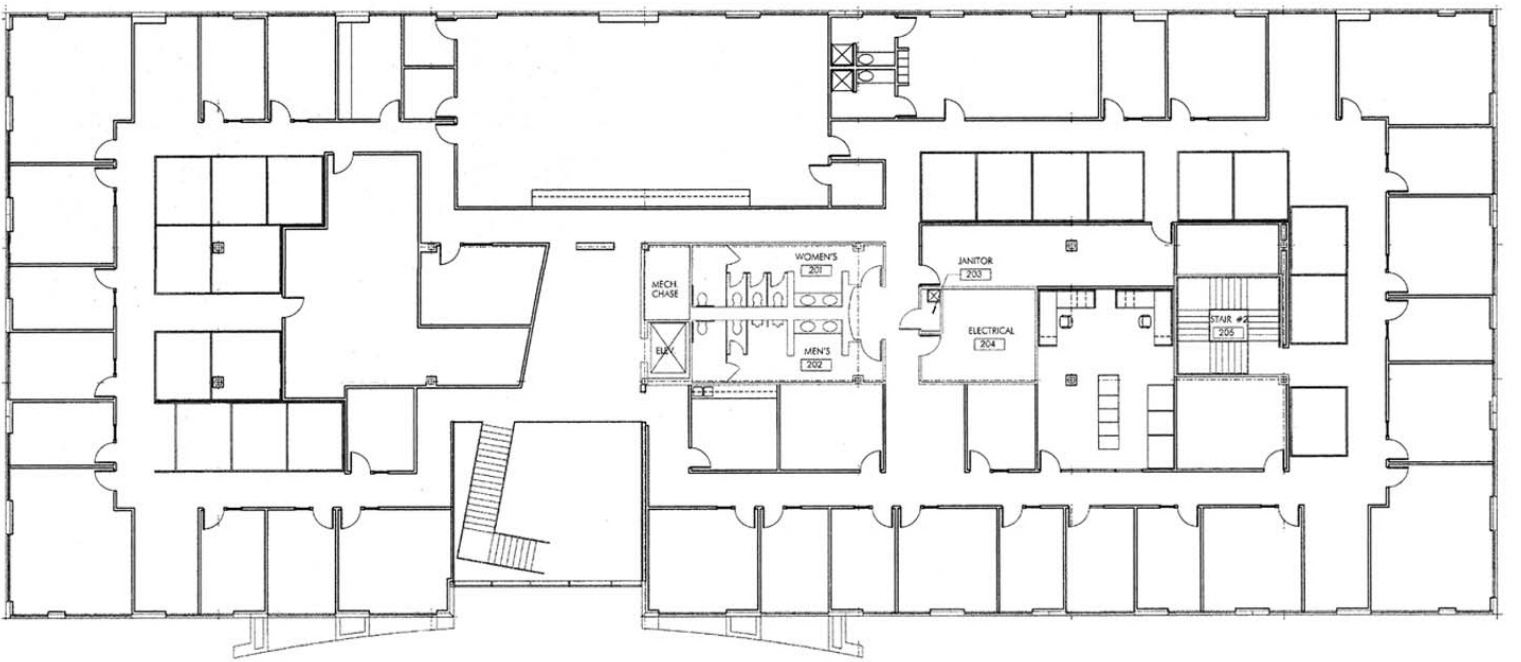


Vintage
Interests





1st Floor – 19,500 sf



2nd Floor – 18,630 sf

Vintage
Interests



For Leasing Information:
T.D. Briggs
tbriggs@pelotonrealty.com

Phone 214.220.0600
Fax: 214.220.0619