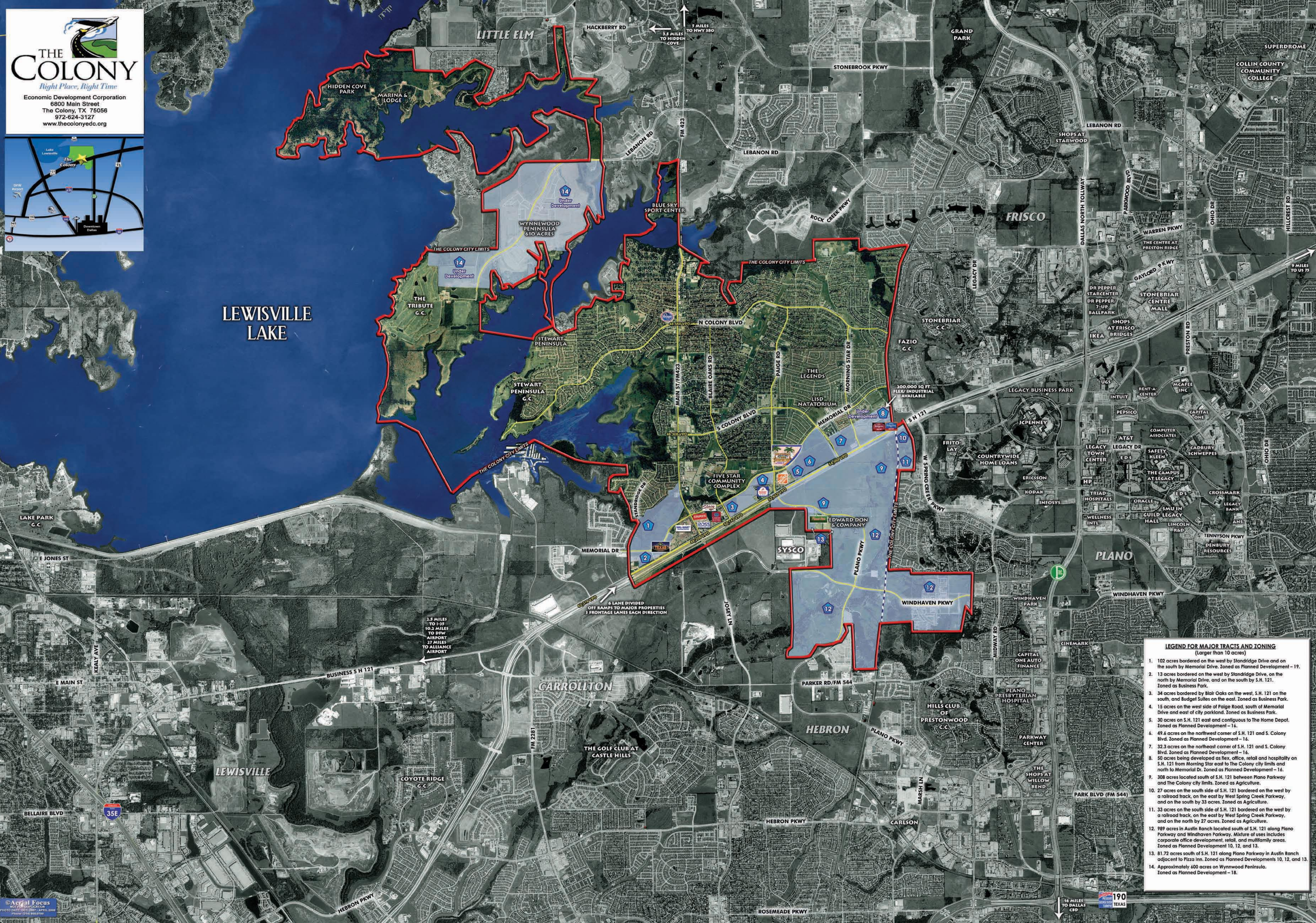


**THE COLONY**  
*Right Place, Right Time*  
 Economic Development Corporation  
 6800 Main Street  
 The Colony, TX 75056  
 972-624-3127  
 www.thecolonyedc.org



- LEGEND FOR MAJOR TRACTS AND ZONING**  
 (Larger than 10 acres)
- 102 acres bordered on the west by Standridge Drive and on the south by Memorial Drive. Zoned as Planned Development - 19.
  - 13 acres bordered on the west by Standridge Drive, on the north by Memorial Drive, and on the south by S.H. 121. Zoned as Business Park.
  - 34 acres bordered by Blair Oaks on the west, S.H. 121 on the south, and Budget Suites on the east. Zoned as Business Park.
  - 15 acres on the west side of Paige Road, south of Memorial Drive and east of city parkland. Zoned as Business Park.
  - 30 acres on S.H. 121 east and contiguous to The Home Depot. Zoned as Planned Development - 14.
  - 49.6 acres on the northwest corner of S.H. 121 and S. Colony Blvd. Zoned as Planned Development - 16.
  - 32.3 acres on the northeast corner of S.H. 121 and S. Colony Blvd. Zoned as Planned Development - 16.
  - 50 acres being developed as flex, office, retail and hospitality on S.H. 121 from Morning Star east to The Colony city limits and north to Memorial Dr. Zoned as Planned Development - 16.
  - 308 acres located south of S.H. 121 between Plano Parkway and The Colony city limits. Zoned as Agriculture.
  - 27 acres on the south side of S.H. 121 bordered on the west by a railroad track, on the east by West Spring Creek Parkway, and on the south by 33 acres. Zoned as Agriculture.
  - 33 acres on the south side of S.H. 121 bordered on the west by a railroad track, on the east by West Spring Creek Parkway, and on the north by 27 acres. Zoned as Agriculture.
  - 989 acres in Austin Ranch located south of S.H. 121 along Plano Parkway and Windhaven Parkway. Mixture of uses includes corporate office development, retail, and multifamily areas. Zoned as Planned Development 10, 12, and 13.
  - 81.73 acres south of S.H. 121 along Plano Parkway in Austin Ranch adjacent to Pizza Inn. Zoned as Planned Developments 10, 12, and 13.
  - Approximately 400 acres on Wynnewood Peninsula. Zoned as Planned Development - 18.